

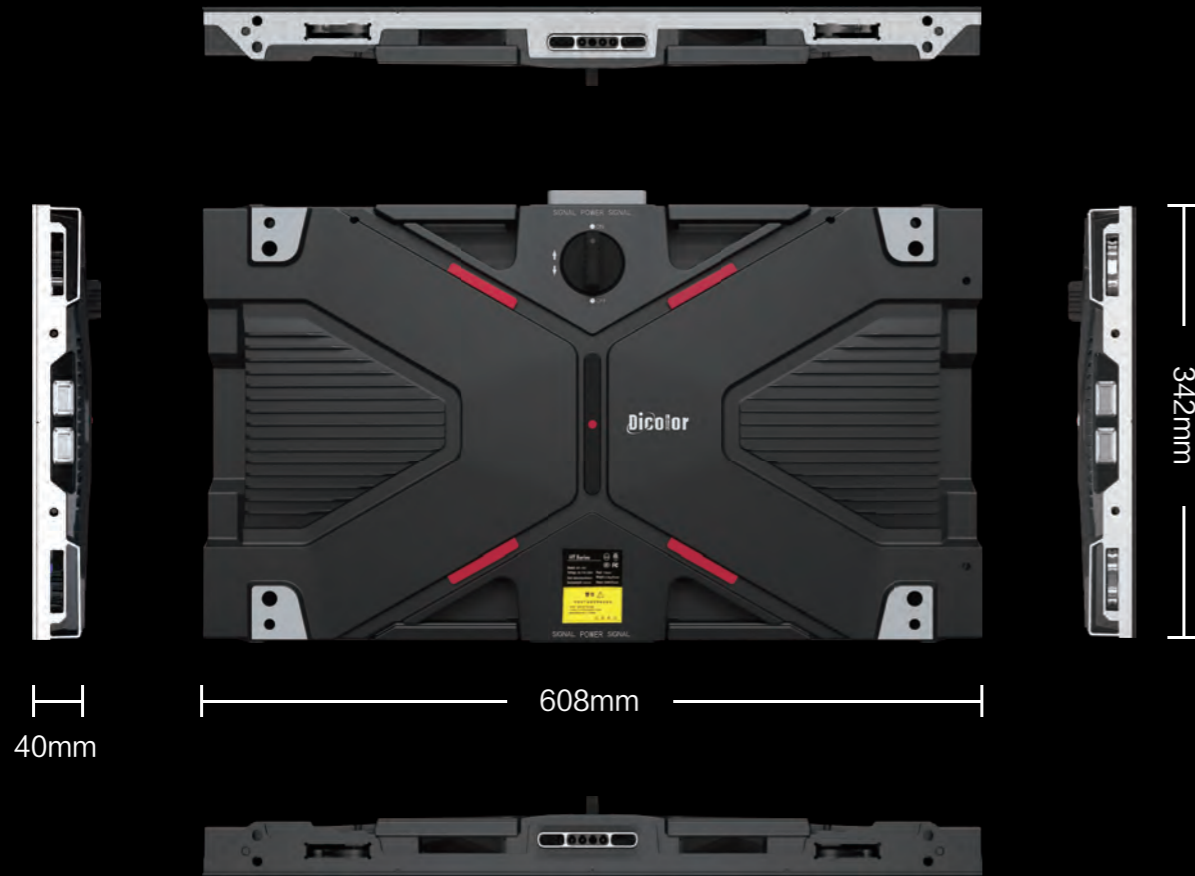
Practical For Application

HT SERIES Practical For Application



- HD**
High Definition
- 
Full Front Maintenance
- 
Dual-Backup
- 
Wireless Connection
- 
Extremely Light & Slim
- 
Rectangular Splicing
- 16:9**
16:9 Ratio
- 2K/4K**
2K/4K Standard Resolution

Appearance



Product Specifications

Product	HT-121	HT-131	HT-141	HT-151	HT-191
Pixel Pitch (mm)	1.267	1.357	1.461	1.583	1.9
Cabinet size (WxHxD/mm)	608 × 342 × 40	608 × 342 × 40	608 × 342 × 40	608 × 342 × 40	608 × 342 × 40
Cabinet Resolution	480 × 270	448 × 252	416 × 234	384 × 216	320 × 180
Cabinet Weight (Kg)	6.5	6.5	6.5	6.5	6.5
Brightness (Nits)	600	600	600	600	800
Refresh Rate (Hz)	≥2880	≥2880	≥2880	≥3840	≥3840
Gray Scale (Bit)	14	14	14	14	14
IP Rating (Front/Rear)	IP40/IP21	IP40/IP21	IP40/IP21	IP40/IP21	IP40/IP21
Max./Avg Power Consumption(W/m ²)	583/195	673/224	673/224	790/264	776/259
Curve	90 °				

High Grey Level High Refresh Rate Perfect Display

Low brightness with high grey level and high refresh rate, stable dynamic display effect, no ripple, no flicker, the edge of the image is clear, and the visual experience is more comfortable.



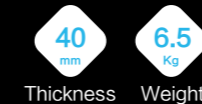
Dual-backup Design

Dual-backup design of the power and signal, making the fine pixel products more steady and reliable.



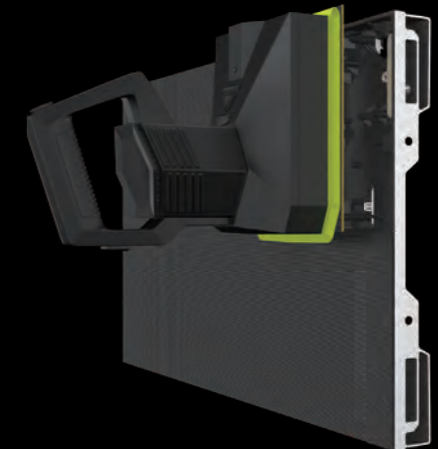
Extremely Light and Slim

Adopt die-casting modular design, 16:9 ratio design, installation width only 40 mm, leading in this industry, saving the installation space and edge covering cost.



Easy Maintenance

Available for installation on the wall, full front maintenance for the modules, receiving cards, and power suppliers, easy installation and maintenance.



Wireless Connection

Wireless connection technology and port backup function, reducing the wire connection between the cabinets, to save time and cost.



90° Rectangular Splicing

Rectangular splicing is available, structural fine-tuning technology, ensuring the flatness when splicing, seamless splicing, to solve the industry accuracy difficulty in splicing of fine pixel products. Coupler locks embedded inside four sides of the cabinets, making the installation easier and more convenient, saving the time and labor.

